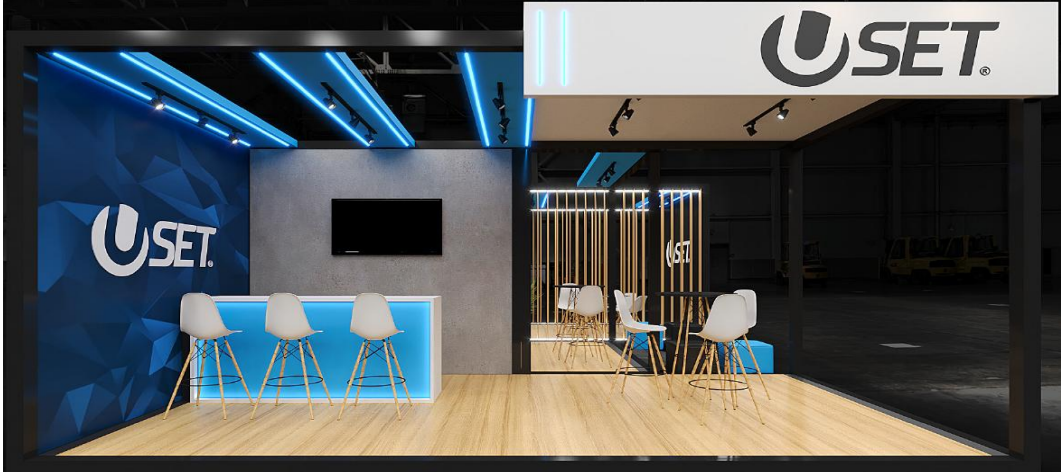


# Estandes sustentáveis montagens 2026



# Uset

54 m2 | R\$ 1.196,00/m<sup>2</sup>



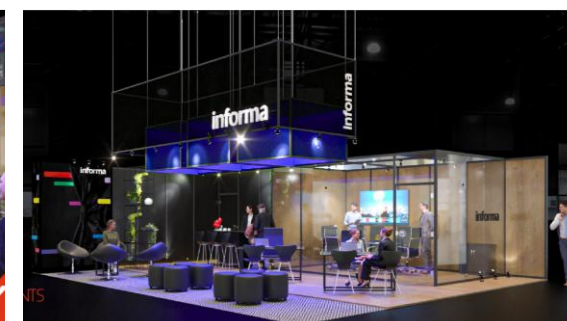
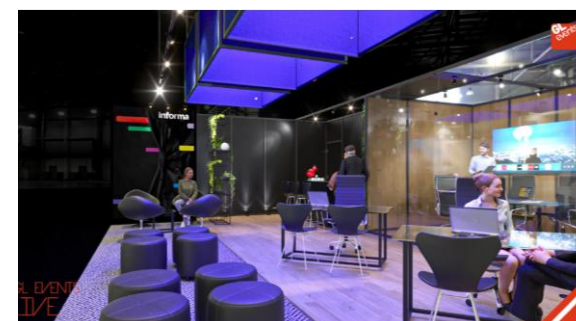
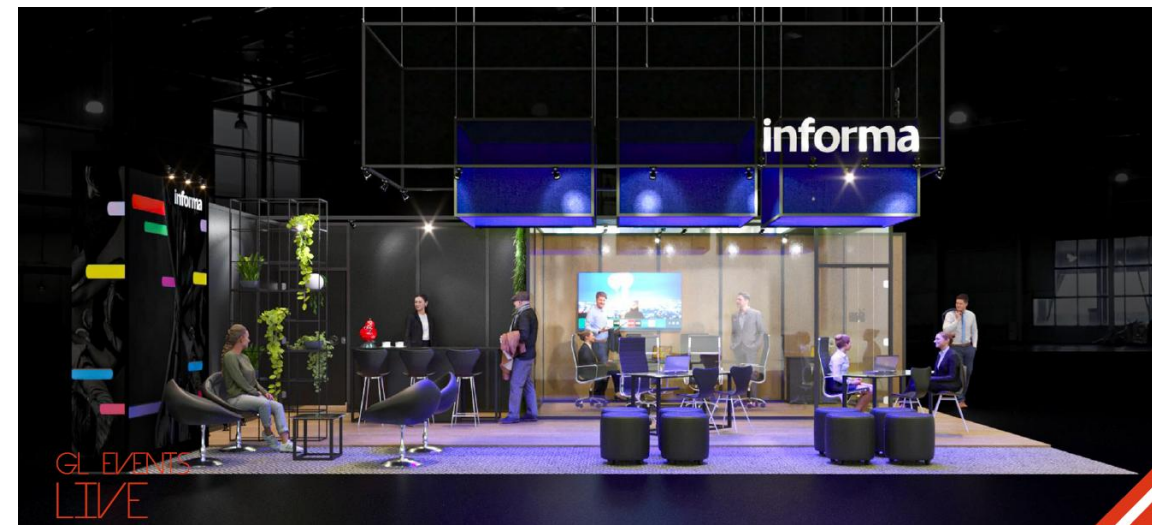
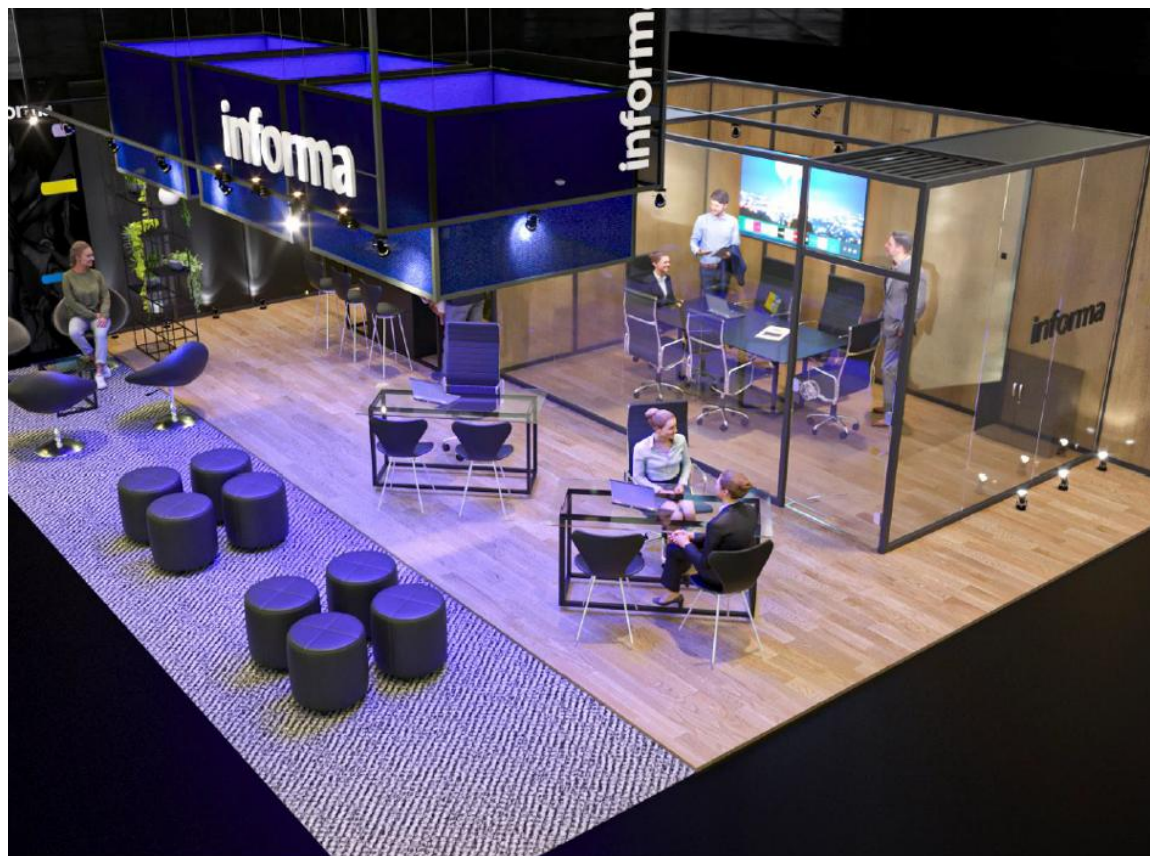
# Octarte

70 a 120 m<sup>2</sup> | R\$ 1.363,69/m<sup>2</sup>



# GL Live 1

80 m2 | R\$ 1.839,50/m<sup>2</sup>



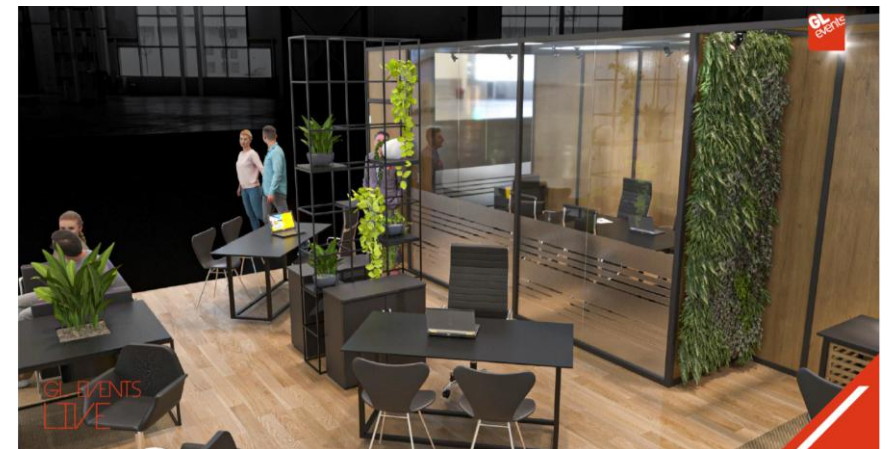
# GL Live 2

100 m2 | R\$ 1.611,06/m<sup>2</sup>



# GL Live 3

150 m2 | R\$ 1.359,49/m<sup>2</sup>



# Apollo 1

80 m<sup>2</sup> | R\$ 1.874,38/m<sup>2</sup>



# Apollo 2

150 m<sup>2</sup> | R\$ 1.406,71/m<sup>2</sup>



## **USET - Simone Rodrigues/ Rita Amaral**

[comercial3@uset.com.br](mailto:comercial3@uset.com.br) | 11 99405-1600/ 11 94460 3534

## **Octarte - Osório Neto**

[osorioneto@octarte.com.br](mailto:osorioneto@octarte.com.br) | 61 98171-5981

## **GL Live - Denise Zampieri**

[denise.zampieri@glbr.com.br](mailto:denise.zampieri@glbr.com.br) | 11 94237-3183

## **Apolo - Ricardo**

[comercial@apollo-eventos.com](mailto:comercial@apollo-eventos.com) | 11 981815528

Não incluso nos projetos:

- paisagismo
- audio&video

# Contatos

Obrigado

[www.informamarkets.com.br/betterstands](http://www.informamarkets.com.br/betterstands)

